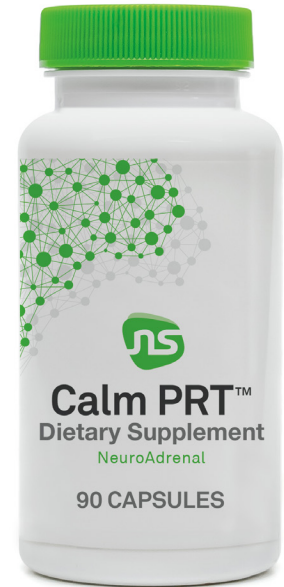


# Calm PRT

Decreases norepinephrine and contains ingredients important for regulating the stress response, sleep, and reducing anxiousness\*



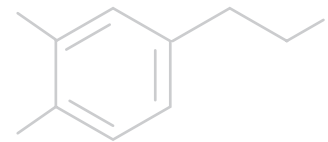
### Patient Profile†

- Tired but wired - on edge, yet exhausted\*
- Difficulty sleeping at night and waking in the morning\*
- Symptoms of overstimulation and adrenaline\*

## Key Ingredients

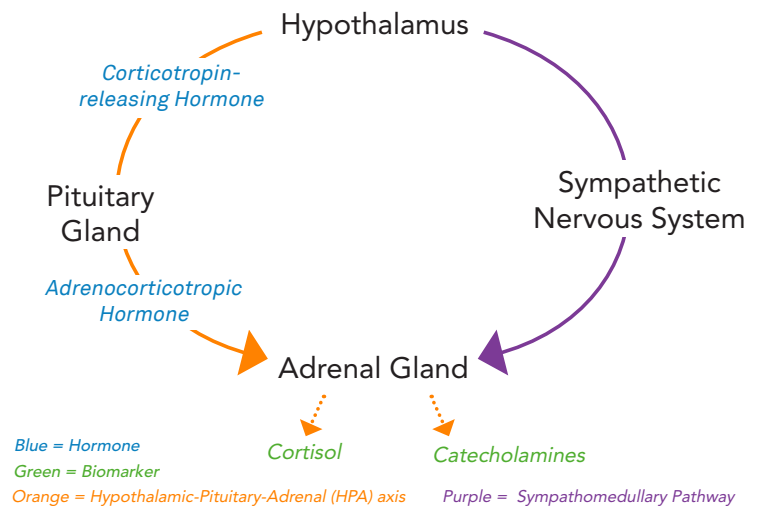
<p><i>Rhodiola rosea</i> root extract (standardized to 9-15% rosavins, providing 112.5 mg of rosavins)</p>	<ul style="list-style-type: none"> <li>■ Botanical adaptogen shown to <b>reduce anxiousness and stress-related effects</b><sup>1,2*</sup></li> </ul>
<p>Phosphatidylserine</p>	<ul style="list-style-type: none"> <li>■ Component of cell membranes important for receptor-mediated interactions<sup>3*</sup></li> <li>■ Phosphatidylserine is thought to interact with cell membranes in order to <b>dampen hypothalamic signaling and regulate the stress response</b><sup>4*</sup></li> </ul>
<p>Glycine</p>	<ul style="list-style-type: none"> <li>■ Major inhibitory neurotransmitter that <b>crosses the blood-brain barrier</b><sup>5*</sup></li> <li>■ Glycine binds receptors that regulate temperature during sleep<sup>6*</sup></li> </ul>
<p>Taurine</p>	<ul style="list-style-type: none"> <li>■ Neuroprotective amino acid that provides antioxidant protection and <b>demonstrates GABA-A agonist activity</b><sup>7-9*</sup></li> <li>■ GABA is the primary inhibitory neurotransmitter in the brain important for calm and sleep<sup>10-12</sup></li> </ul>

## The Science



- In response to **stress**, the sympathetic nervous system (SNS) and hypothalamic-pituitary-adrenal (HPA) axis signal to the adrenals to release catecholamines (norepinephrine and epinephrine) and cortisol<sup>13</sup>
- **Prolonged stress** is associated with dysregulation of the HPA axis, which can affect catecholamine and cortisol levels<sup>14</sup>

## NeuroAdrenal Response

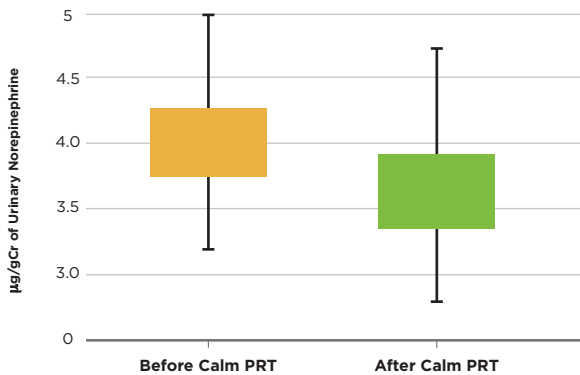


† Symptom depictions represent a possible presentation based on scientific information and claims found on this sheet, references provided on reverse.

**\*These statements have not been evaluated by the Food and Drug Administration. This product is not intended to diagnose, treat, cure or prevent any disease.**

# MORE SCIENCE BEHIND CALM PRT

Figure 1. Calm PRT Decreases Norepinephrine<sup>17\*</sup>



## HPA axis and norepinephrine interventions

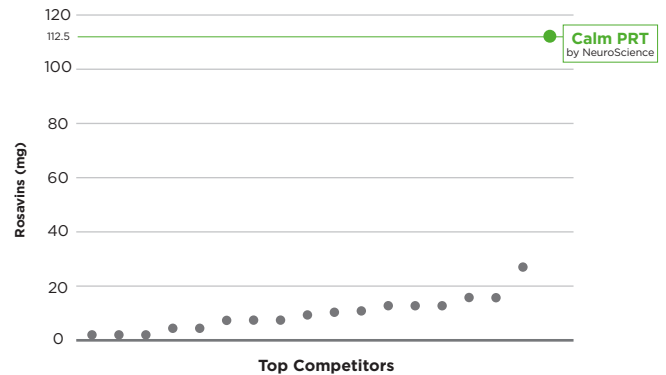
Increased activity from the HPA axis in response to stressors leads to a “fight or flight” effect, including increased levels of norepinephrine<sup>13</sup>

- Patients with anxiousness and altered learning show increased HPA axis sensitivity, leading to persistently high levels of urinary norepinephrine<sup>15</sup>
- Elevated levels of norepinephrine can disrupt circadian rhythm, perpetuating stress, anxiousness, and fatigue<sup>16,17</sup>

**Calm PRT contains ingredients important for reducing norepinephrine and cortisol during anxiousness and stress\***

- A meta-analysis of 91 people demonstrated a significant decrease in norepinephrine following the use of Calm PRT ( $p < 0.01$ ) (Figure 1.)<sup>18\*</sup>
- Additionally, a meta-analysis showed Calm PRT significantly decreased evening cortisol in 106 people ( $p < 0.01$ )<sup>18\*</sup>

Figure 2. US Rosavin Supplements



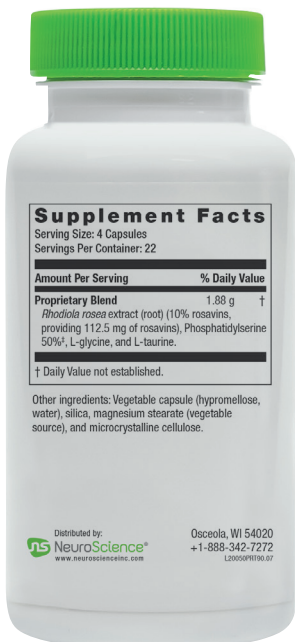
## Highest rosavin standardization

Rhodiola, with high amounts of rosavins, has been shown to regulate the stress response by interacting with the HPA system<sup>19\*</sup>

- While the overall amount of a botanical is important, the standardization, or actual amount of active ingredient within a given botanical, is crucial to the efficacy of the product
- Many products claim to contain sizable amounts of Rhodiola but use lower standardizations of rosavins, resulting in low amounts of rosavins in the product

**In a meta-analysis of public formulas, Calm PRT contains the highest standardization of rosavins on the market, providing more milligrams of the active component per serving compared to other Rhodiola containing products<sup>20</sup> (Figure 2.)**

- Calm PRT delivers 112.5 mg of rosavins per serving, more than triple the closest competitor and provides significant results for patients with poorly managed stress and anxiousness<sup>1,2\*</sup>



Item Number	Available Size	Serving Size
20050	90 Capsules	4 Capsules



Find the right supplement with NeuroSelect

Learn more at [www.neuroselect.com](http://www.neuroselect.com)

All NeuroScience products undergo rigorous third-party testing to guarantee label claims of each ingredient and the absence of heavy metals, pesticides, residual solvents, and microbes

1. Bystritsky A, et al. J Altern Complement Med. 2008;14(2):175-80.
2. Olsson E, et al. Planta Med. 2009;75(2):105-12.
3. Monteleone P, et al. Eur J Clin Pharmacol. 1992;41:385-8.
4. Glade M and Smith K. Nutrition. 2015;31(6):781-6.
5. Kawai N, et al. Amino Acids. 2012;42(6):2129-37.
6. Kawai N, et al. Neuropsychopharmacol. 2015;40(6):1405-16.
7. Kumari N, et al. Adv Exp Med Biol. 2013;775:19-27.
8. Shimada K, et al. Adv Exp Med Biol. 2015;803:581-96.
9. Kletke O, et al. PLoS One. 2013;8(4):e61733.
10. Gou Z, et al. Dongwuxue Yanjiu. 2012;33(E5-6):E75-81.
11. Mohler H. Neuropharmacol. 2012;62(1):42-53.
12. Saper C, et al. Nature. 2005;437(7063):1257-63.
13. Lee D, et al. BMB Rep. 2015;48(4):209-16.
14. Krizanova O, et al. Stress. 2016;19(4):419-28.
15. Heim C, et al. CNS Spectr. 2009;14(1):13-24.
16. Meerlo P, et al. Sleep Med Rev. 2008;12:197-210.
17. Mehta R, et al. Neuropharm. 2016;14:28-40.
18. Data on file. 2006. NeuroScience, Inc., Osceola, WI 54020.
19. Panossian A, et al. Phytomedicine. 2010;17(7):481-493.
20. Data on file. 2019. NeuroScience, Osceola, WI 54020.

†This product uses SerinAid® (Phosphatidylserine). SerinAid® is a registered trademark of Chemi Nutra.

\*These statements have not been evaluated by the Food and Drug Administration. This product is not intended to diagnose, treat, cure or prevent any disease.